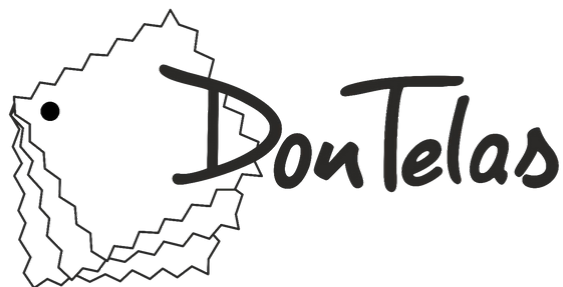


LINUM



## DON TELAS

FICHA TÉCNICA

---



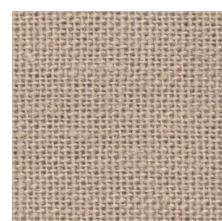
121



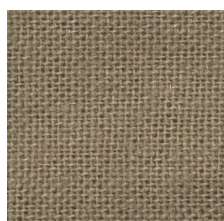
05



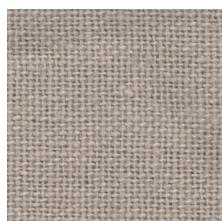
100



19



18



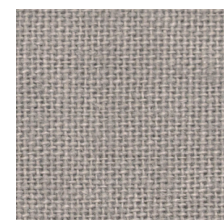
105



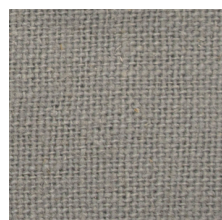
52



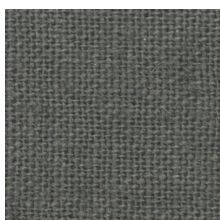
150



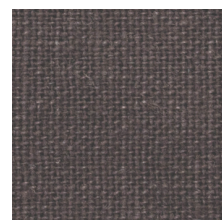
180



46



200



45

---

# CARACTERÍSTICAS

Composición
Ancho
Peso
Martindale
Orientación
Aplicaciones
Instrucciones de lavado

100% LINO

280 cm

280 g/m<sup>2</sup>

<20.000

