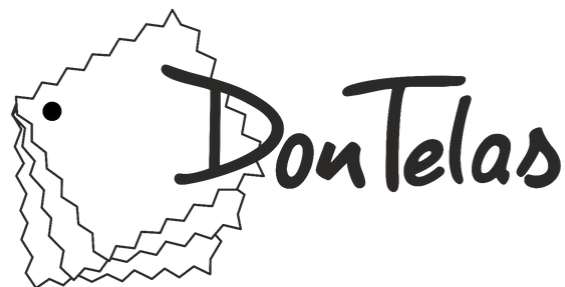


ANDRATX

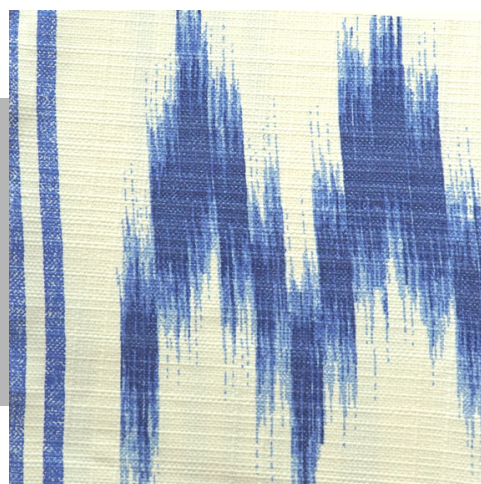


DON TELAS

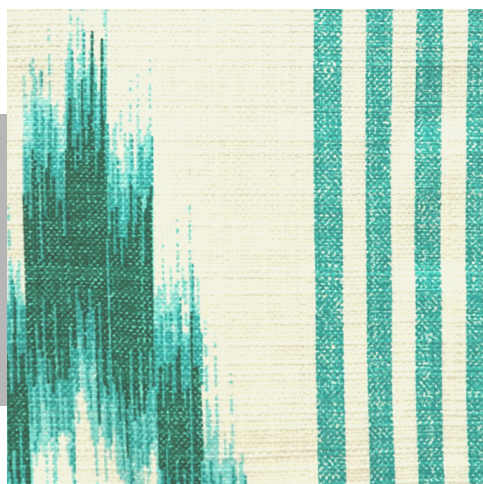
FICHA TÉCNICA



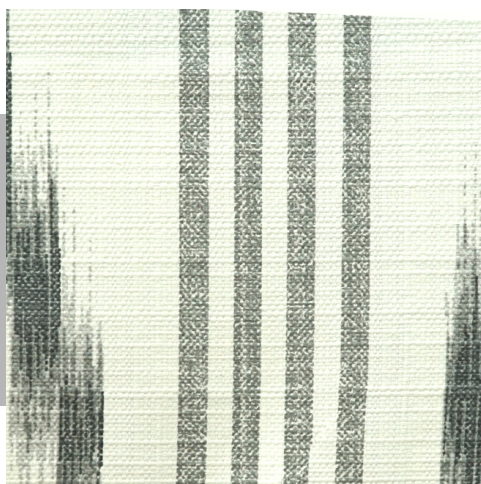
ANDRATX A-1
Rosa



ANDRATX A-2
Azul



ANDRATX A-3
Turquesa



ANDRATX A-4
Gris

CARACTERÍSTICAS

Composición

100% ALGODON

Ancho

280 cm

Orientación



Aplicaciones



Instrucciones de lavado



TELAS MALLORCA S.A.
C/Gabriel Alzamora, 20
Pol. Ind. Son Fuster
Tlf. (+34) 971 47 90 10
dontelas@dontelas.es

07009 Palma de Mallorca
Fax. (+34) 971 47 90 59
www.dontelas.es

